

# Sikaflex® PRO

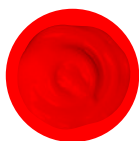
HIGH PERFORMANCE POLYURETHANE JOINT SEALANT

# Sikaflex® 11FC

1-COMPONENT ELASTIC JOINT SEALANT AND MULTIPURPOSE ADHESIVE



White



Grey



Japan Beige



Black

\*Above colours are available for both Sikaflex® PRO & Sikaflex® 11FC



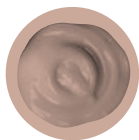
Off White



Dark Grey



Pale Brown



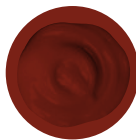
Redwood



Sandstone



Dark Amber



Brick Red

\*Above colours are only available for Sikaflex® PRO



Transparent

Transparent  
colour is only  
available for  
Sikaflex®-112  
Crystal Clear

Sikaflex®-112 Crystal Clear is a 1-component, multipurpose transparent adhesive and sealant with good initial grab which bonds and seals most construction substrates for internal and external use.

\*This colour chart is a guide only, colours may vary slightly.



# Sikaflex® PRO

HIGH PERFORMANCE POLYURETHANE JOINT SEALANT



## PACKAGING:

- ▶ 310ml Cartridge
- ▶ 600ml Sausage

\* Not all sizes available in all colours.

## USES:

- ▶ Expansion Joints
- ▶ Construction Joints
- ▶ Connection Joints
- ▶ Infill panel joints
- ▶ Flexible draught proofing
- ▶ Joints for precast concrete
- ▶ External walling & Cladding Joints

## ADVANTAGES:

- ▶ Cuttable, sandable and paintable
- ▶ Non-sag on vertical joints up to 30mm wide
- ▶ Movement capability:  $\pm 25\%$
- ▶ Good weathering resistance

## EXCELLENT ADHESION TO:

- ▶ All cement based materials
- ▶ Brick
- ▶ Ceramics
- ▶ Polyurethane
- ▶ Most metals
- ▶ Most timbers
- ▶ Most common construction materials

Please refer to the current Product Data Sheet for further information.

# Sikaflex® 11FC

1-COMPONENT ELASTIC JOINT SEALANT AND MULTIPURPOSE ADHESIVE



## PACKAGING:

- ▶ 310ml Cartridge
- ▶ 600ml Sausage

\* Not all sizes available in all colours.

## USES:

- ▶ Joint sealant and multipurpose adhesive suitable for various applications
- ▶ Excellent pick resistance; ideal for shops, prisons, schools etc.
- ▶ Flexible sealing applications in walls and floors, around pipes and ducts
- ▶ Containers, water tanks & silos

## ADVANTAGES:

- ▶ Fast cure rate
- ▶ High performance, permanently elastic bond
- ▶ Movement capability:  $\pm 10\%$
- ▶ Flexible and elastic
- ▶ Impact and vibration absorbing

## EXCELLENT ADHESION TO:

- ▶ All cement based materials
- ▶ Brick
- ▶ Ceramics
- ▶ Polyurethane
- ▶ Most metals
- ▶ Most timbers
- ▶ Most common construction materials

Please refer to the current Product Data Sheet for further information.