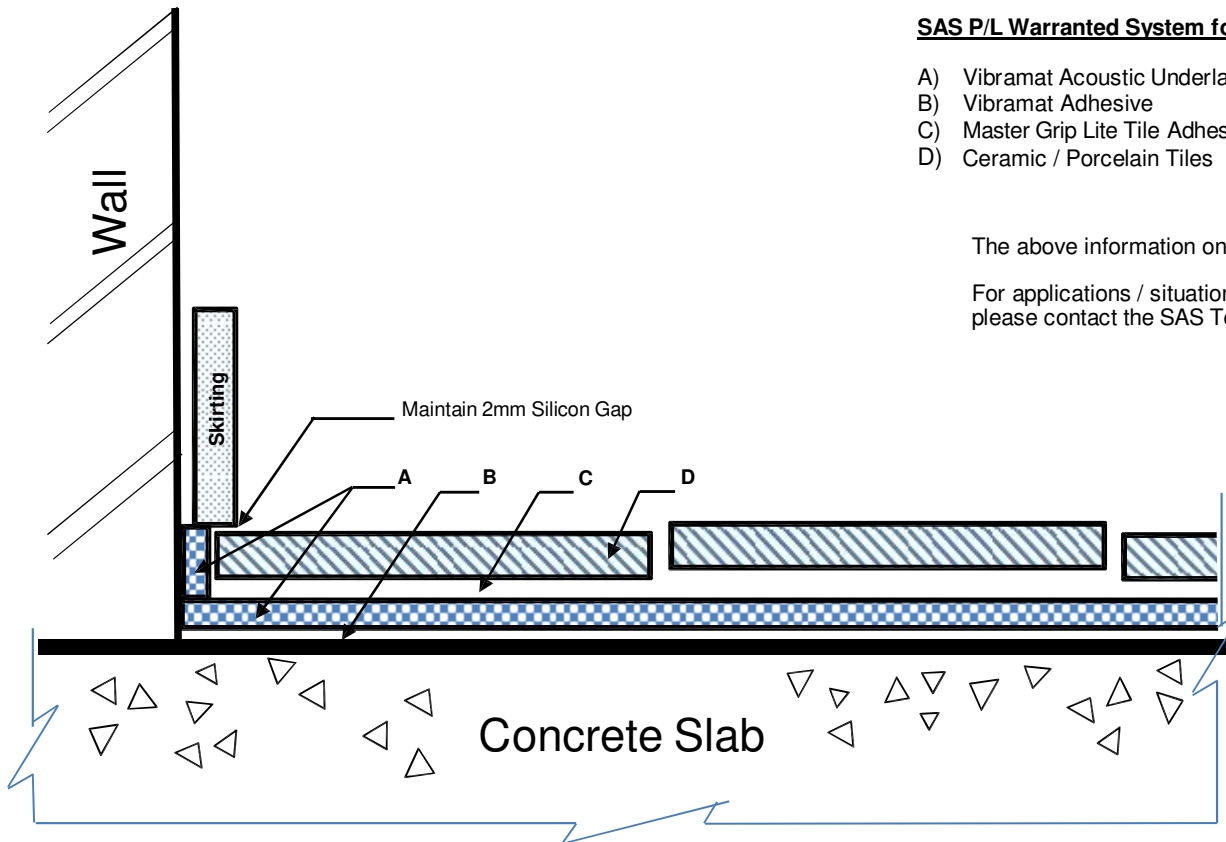


VIBRAMAT Dry Areas Direct Stick Installation



SAS P/L Warranted System for Typical Ceramic and Porcelain Tiles Installations

- A) Vibramat Acoustic Underlay 3mm, 4mm, 5mm or 10mm
- B) Vibramat Adhesive
- C) Master Grip Lite Tile Adhesive
- D) Ceramic / Porcelain Tiles

The above information on adhesives is provided by SAS Australasia P/L

For applications / situations not mentioned in these instructions, please contact the SAS Technical team for further information

This diagram is for illustrative purposes only and is not to scale

VIBRAMAT

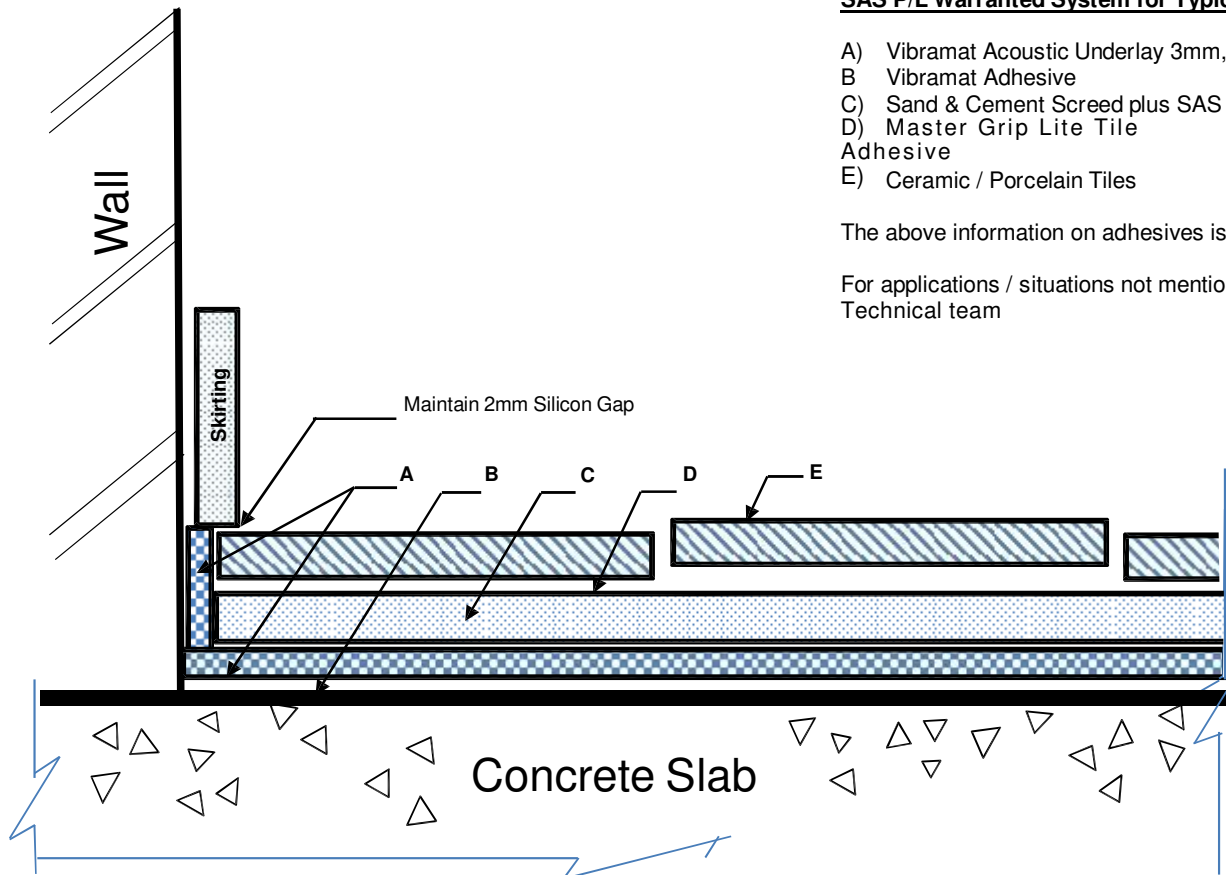
Dry Area Bonded Screed Installation

SAS P/L Warranted System for Typical Ceramic and Porcelain Tiles Installations

- A) Vibramat Acoustic Underlay 3mm, 4mm, 5mm or 10mm
- B) Vibramat Adhesive
- C) Sand & Cement Screed plus SAS Master Additive 3:1 - minimum thickness of screed 25mm
- D) Master Grip Lite Tile Adhesive
- E) Ceramic / Porcelain Tiles

The above information on adhesives is provided by SAS Australasia P/L

For applications / situations not mentioned in these instructions, please contact the SAS Technical team



This diagram is for illustrative purposes only and is not to scale

VIBRAMAT

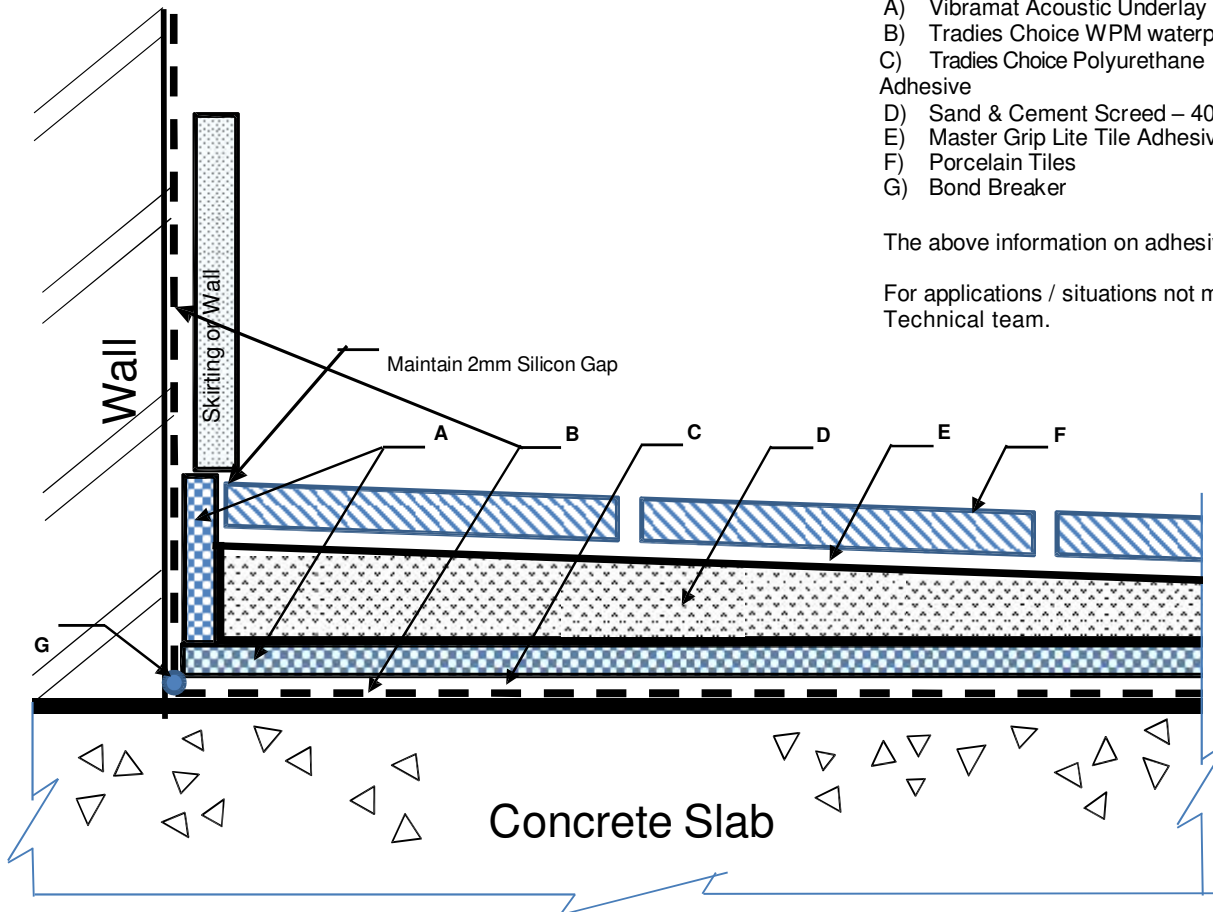
Wet Area Tiling over Unbonded Screed Waterproofing below the Acoustic Underlay

SAS P/L Warranted System for Typical Ceramic and Porcelain Tiles Installations

- A) Vibramat Acoustic Underlay 3mm, 4mm, 5mm or 10mm thicknesses
- B) Tradies Choice WPM waterproofing membrane
- C) Tradies Choice Polyurethane Adhesive
- D) Sand & Cement Screed – 40mm thickness of screed down to 25mm at floor waste
- E) Master Grip Lite Tile Adhesive
- F) Porcelain Tiles
- G) Bond Breaker

The above information on adhesives is provided by SAS Australasia P/L

For applications / situations not mentioned in these instructions, please contact the SAS Technical team.



This diagram is for illustrative purposes only and is not to scale

VIBRAMAT

Wet Area Tiling over Bonded Screed

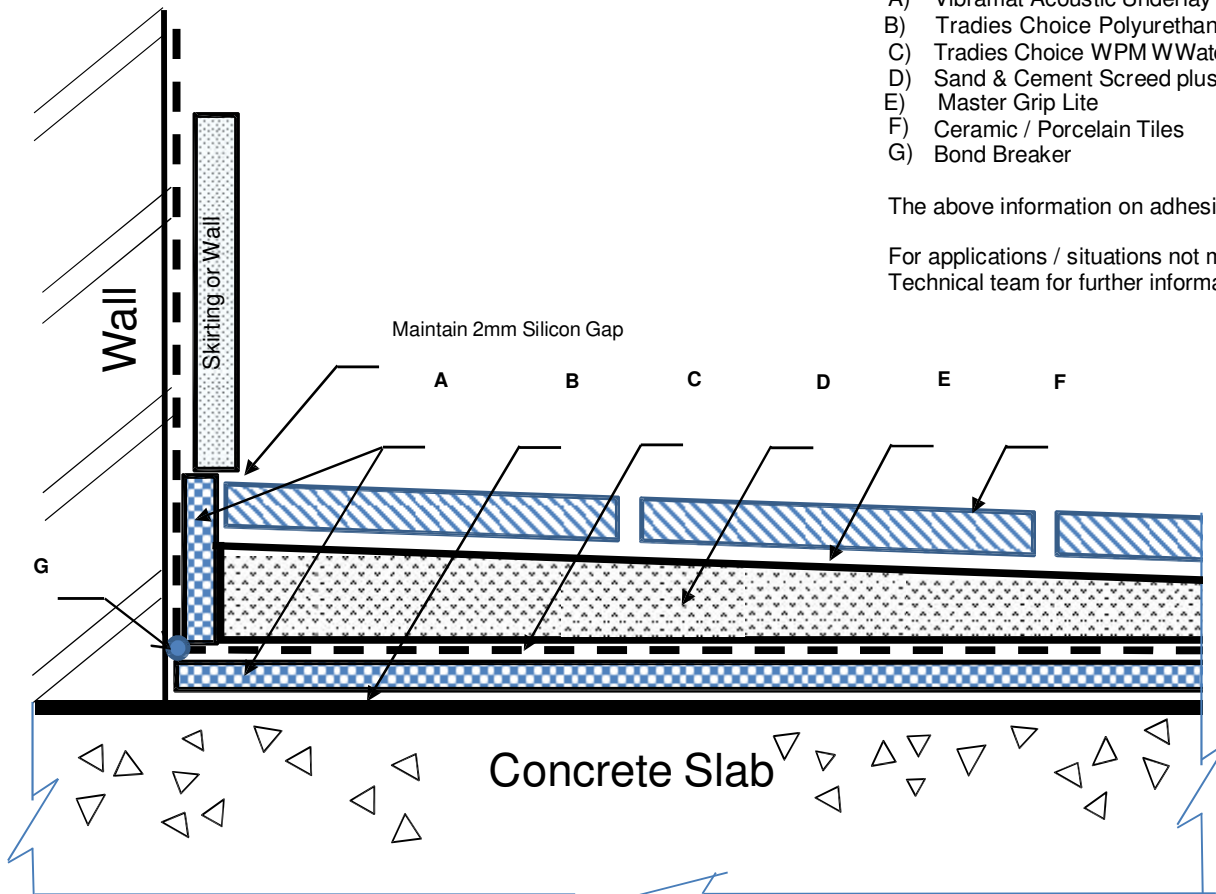
Waterproofing above the Acoustic Underlay

SAS P/L Warranted System for Typical Ceramic and Porcelain Tiles Installations

- A) Vibramat Acoustic Underlay 3mm, 4mm, 5mm or 10mm thicknesses
- B) Tradies Choice Polyurethane
- C) Tradies Choice WPM Waterproofing Membrane
- D) Sand & Cement Screed plus Master Additive 3:1 - minimum thickness of screed 25mm
- E) Master Grip Lite
- F) Ceramic / Porcelain Tiles
- G) Bond Breaker

The above information on adhesives is provided by SAS Australasia P/L

For applications / situations not mentioned in these instructions, please contact the SAS Technical team for further information



This diagram is for illustrative purposes only and is not to scale

VIBRAMAT

Wet Area Direct Stick

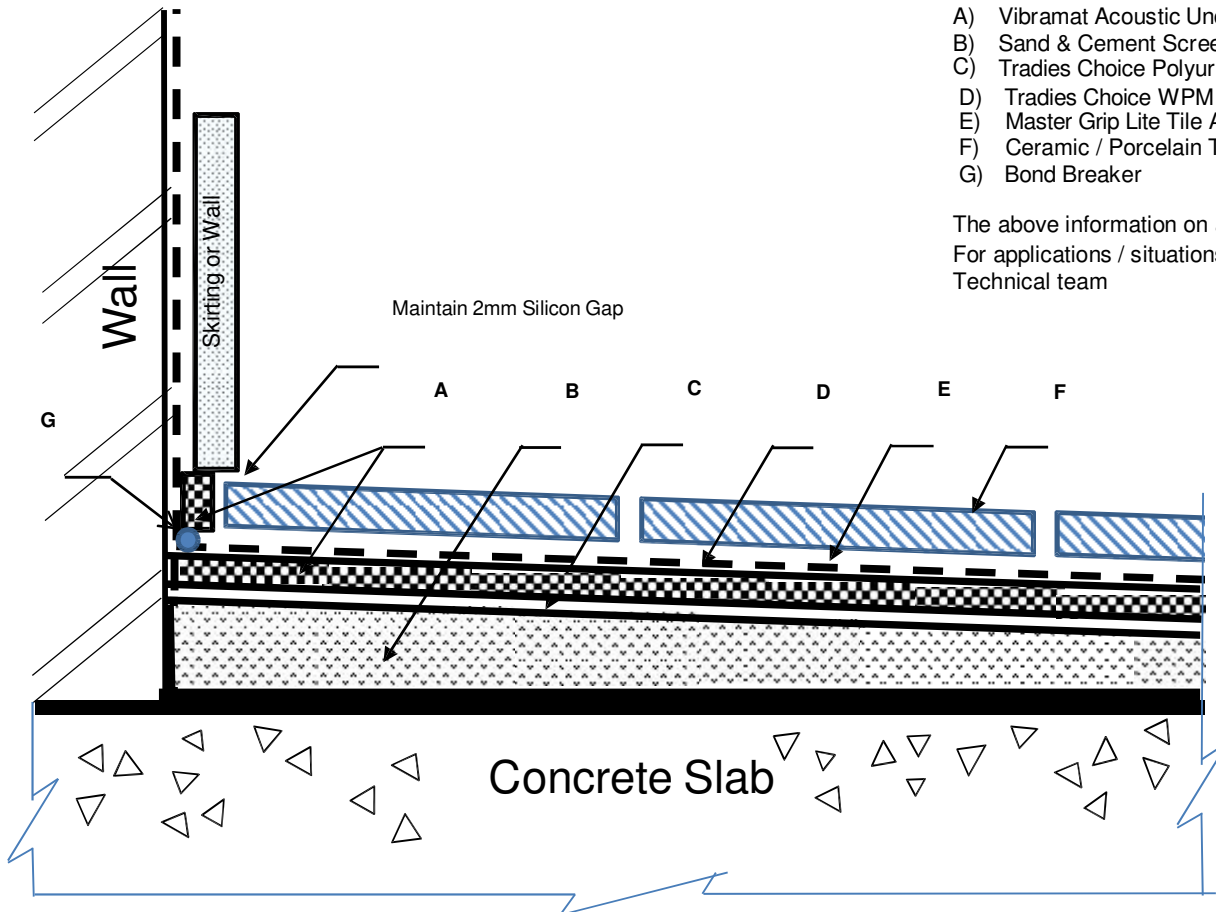
Waterproofing above the Acoustic Underlay

SAS P/L Warranted System for Typical Ceramic and Porcelain Tiles Installations

- A) Vibramat Acoustic Underlay 3mm, 4mm, 5mm or 10mm thicknesses
- B) Sand & Cement Screed plus Master Additive 3:1 - minimum thickness of screed 25mm
- C) Tradies Choice Polyurethane Adhesive
- D) Tradies Choice WPM Waterproofing Membrane
- E) Master Grip Lite Tile Adhesive
- F) Ceramic / Porcelain Tiles
- G) Bond Breaker

The above information on adhesives is provided by SAS Australasia P/L

For applications / situations not mentioned in these instructions, please contact the SAS Technical team



This diagram is for illustrative purposes only and is not to scale